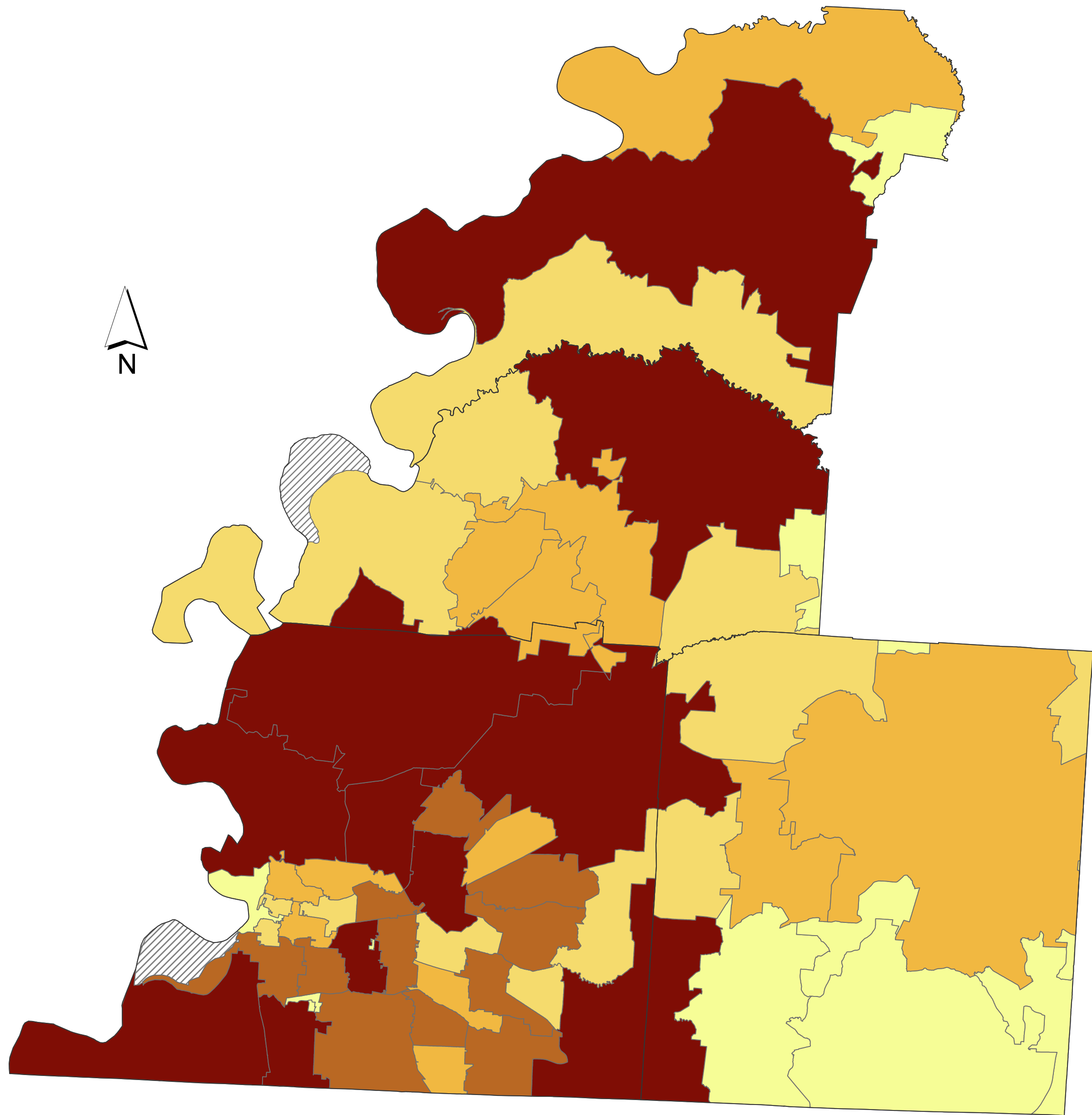
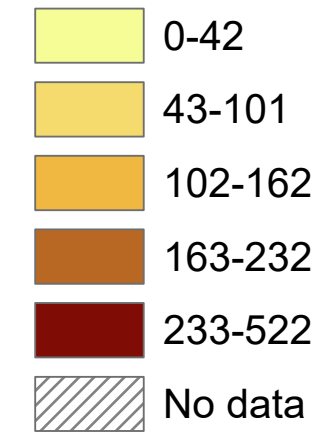


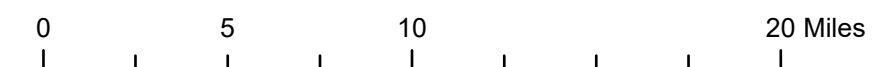
Medicare Beneficiaries with Power-Dependent Devices* in the Mid South Emergency Planning Coalition, May 2021



Number of Beneficiaries with Power-Dependent Devices per ZIP Code



*Power-dependent device and durable medical equipment (DME) use is determined by the presence of Medicare FFS/Medicare Advantage claims. This data includes beneficiaries who have a claim for an oxygen concentrator in the last 36 months; a ventilator, bi-level positive airway pressure device (BiPAP), enteral feeding, IV infusion pump, suction pump, motorized wheelchair, scooter, or electric bed in the last 13 months; at-home end-stage renal disease (ESRD) dialysis in the last 3 months; or a cardiac device in the last 5 years. Individuals are counted once regardless of how many types of DME they utilize. Individuals are not included if they reside in a nursing home or long term care facility.



Data Source: The CMS dataset is developed from Medicare Fee For Service (FFS) Part A and B beneficiary administrative claims data (~32M 65+, blind, ESRD (dialysis), dual-eligible, disabled-can include adults and children) and Medicare Advantage claims data (~17M 65+, blind, ESRD (dialysis), dual-eligible, disabled-can include adults and children). This data does not include individuals that are only enrolled in a State Medicaid Program.
Data Classes: The data in this map are grouped by quantiles. There is an approximately equal number of ZIP codes in each data range.
Author: Kelly Squires, MPH, Epidemiologist, Emergency Preparedness Program, Tennessee Department of Health