



SEPTEMBER 2022, ISSUE 1

The Bridge

A Healthcare Community Connection

Hi everyone

The months seem to continuously fly right by and September is officially here! September is National Preparedness Month, and to participate you can update your [supply kit](#) and create a [family emergency communication plan](#).

September also means that it is finally Exercise month! Heather and I cannot express how thankful we are to each of you who have made the exercise planning process enjoyable.

As always, if you have any questions or concerns, please feel free to contact Heather or myself using the contact information located on page 3.

-Regan



In this Issue

Page 2

- Relevant Links
- Meeting Schedule
- Upcoming Calls
- Current MSEPC Projects

Page 3

- Full-scale Exercise Planning
- Contact Info
- Facebook Info

Page 4

- Word Puzzle

VISIT THE
MSEPC
WEBSITE
[HERE](#)

Relevant Links

(Click below)

- [COVID-19 Test to Treat](#)
- [Monkeypox National Vaccine Strategy](#)
- [Family Emergency Communication Plan- National Preparedness Month](#)
- [CDC E. Coli Investigation Notice Update](#)
- [Suicide Prevention Awareness Month \(SPAM\)](#)
- [COVID-19 Medical Countermeasures and the Commercial Marketplace](#)
- [Back to School: HHS Announces \\$40.22 Million in Youth Mental Health Grants Awarded in August](#)
- [National Special Pathogen System of Care \(NSPS\) Strategy](#)

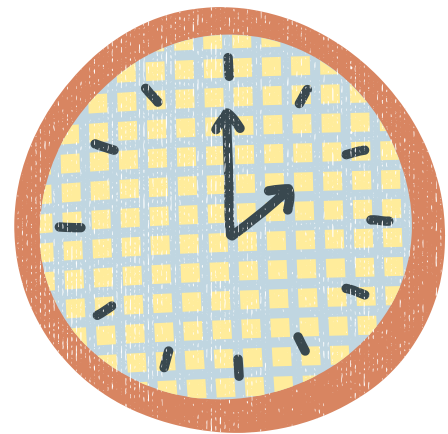
Current MSEPC Projects

- Winter Weather 2021 AAR
- Inventory Audits
- Updating Membership MOUs
- Updating Website
- FY23 Budget
- Full Scale Exercise Planning

MSEPC Meeting Schedule

Register [HERE](#) to receive updated calendar invites, meeting location information and agenda

- **September 15**- Intro to ICS training
- **September 16**- In-patient Providers
- **September 21**- Executive Board Meeting
- **October 20**- Full coalition
- **October 21**- In-Patient Providers



Upcoming Virtual Meetings

- COVID-19 State, Tribal, Local, or Territorial (STLT) Update Call- [Register here](#)
- Zoonoses & One Health Updates (ZOHU) Calls- [Register here](#)
- Clinician Outreach and Communication Activity (COCA) Call- [Register here](#)

2022 Full-Scale Community Exercise

ReadyOp Training Dates

Each facility intending to simulate triage, treatment, or reception of injured victims must have at least one representative attend one of these trainings. Sign up [here](#).

- September 19th 10-11:30 a.m.
- September 19th 2-3:30 p.m.
- September 20th 10-11:30 a.m.
- September 20th 2-3:30 p.m.

ReadyOp Registration

Register for ReadyOp [here](#). We are exercising the use of ReadyOp for notifications and patient tracking during this exercise. This registration link will include you in our list of contacts.

Contact Us!

Heather Fortner | Executive Director
(865) 679-4608
hfortner@midsouthepec.org

Regan Wills | Vulnerable Populations
Coordinator
(662) 501-0094
rwills@midsouthepec.org



Evaluator/Observer Training Dates

Each participating facility must have at least one representative attend one of these trainings. Sign up [here](#).

- September 12th 10-11:30 a.m.
- September 12th 2-3:30 p.m.
- September 13th 10-11:30 a.m.
- September 13th 2-3:30 p.m.
- September 14th 10-11:30 a.m.
- September 14th 2-3:30 p.m.

Exercise Plan

Includes exercise objectives and scenarios



Click [HERE](#) to find us on Facebook

Take a Mental Health Break with a Word Search Puzzle!

FALL WORD SEARCH

H J N I F I P J K R F H R E T
A D M B Z O R U E T F J E Y H
L I U F T W O B M V R F W R A
L Y T N B R O T E P A J O E N
O Y U A Z T N Y B C K S L B K
W J A T C J D R S A E I F M S
E G L O F N D S O E L Q N E G
E S W E A T E R E C V L U V I
N C C C I D E R H L A A S O V
S I E D I R Y A H P P T E N I
O W O R C E R A C S U P M L N
W I Y C G V Y A F R G T A W G
N L D T E Y Y K K P I E I X E
J Q R S L X R E B M E T P E S
Y E T E V G Y T H W I C K U J

ACORN	APPLES	AUTUMN	CANDY	CIDER
FOOTBALL	HALLOWEEN	HARVEST	HAYRIDE	LEAVES
NOVEMBER	OCTOBER	PUMPKIN	RAKE	SCARECROW
SEPTEMBER	SUNFLOWER	SWEATER	THANKSGIVING	TURKEY

We want to hear from you! Upcoming editions of this newsletter will include highlights of members or facilities. Use the link here to nominate a person or facility of interest! Let us know why they are being nominated so we can all get to know each other better!

We also want to make this newsletter something useful. It can be as informative as you wish it to be. Send ideas of what to include next month to: rwills@midsouthepc.org.